



Cables & Accessories

Telecommunication



Smart Systems



Power



**SOLUTIONS EXPERT**

*Home of Advanced Systems*



Al Mazrouei - ICAS W.L.L.

A large, flowing maroon ribbon graphic that starts from the top left and curves towards the top right, partially obscuring the background.

*Qatar*





**“Established in 2005 Al Mazrouei ICAS WLL has been growing steadily in building automation latest technology as well as Cables and Low Current Systems.”**

Al Mazrouei ICAS WLL (ISO 2015 : 9001 Certified - Quality Management System) has been successful in supporting most of the project's requirements in Qatar.

Prompt delivery and fast responses helped us gain client's satisfaction. We are completely dedicated to provide products to all types of organizations. Our suppliers are specialized international companies, leading in their respective fields, who provide a variety of vertical market solutions to all areas in need of low current systems. The high profile projects we have undertaken in Qatar speaks about our success.

To meet the need of our rapidly growing business, we have upgraded our ERP system to advance version of ORION 11J, which is more advanced, comprehensive and scalable information management solution from AZENTIO Software, to streamline our business process.

With four Strategic Business Units (**Cables & Accessories, Smart Systems, Telecommunication and Power**) Al Mazrouei ICAS WLL is your ultimate supplier.

## OUR MISSION

“ To offer a wider variety and an optimal solution through : Great Value, Authentic Quality, and Operational Excellence. ”

## OUR VISION

“ To be the preferred partner of choice. ”

## WHETHER YOU NEED

- Home Automation systems based on EIB - KNX protocols
- Decorative switches / sockets
- Video phone systems
- High standard innovative reliable dimming systems
- IPTV and Sound Systems
- Network connectivity systems, data connectors.
- WiFi wireless solutions
- Industrial Switches & Routers
- Oil and Gas cables
- UPS's, Batteries and Data Centers

**Al Mazrouei ICAS WLL is your most reliable and trusted partner.**



## OUR VALUES

- Integrity
- Safety
- Commitment
- Quality
- Excellence
- Teamwork
- Responsibility

## CODE OF HONOR

- Always say the truth.
- Safety comes first, always.
- Commit towards achievement of company goals.
- Provide the best we can to meet customer satisfaction.
- The Person with better rapport deals with the client
- Be pro-active and not re-active
- Help always a team-mate in need
- Acknowledge breakdown and make new agreement.



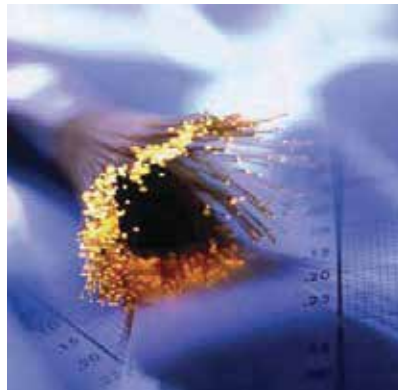
## SERVICES & ADDED VALUE

Al Mazrouei ICAS WLL has a highly skilled staff to provide the following services:

- Maintain inventory locally
- Established supply chain
- Customized cable lengths & cable assemblies
- Integration & installation teams
- System Design



## PRODUCTS PORTFOLIO

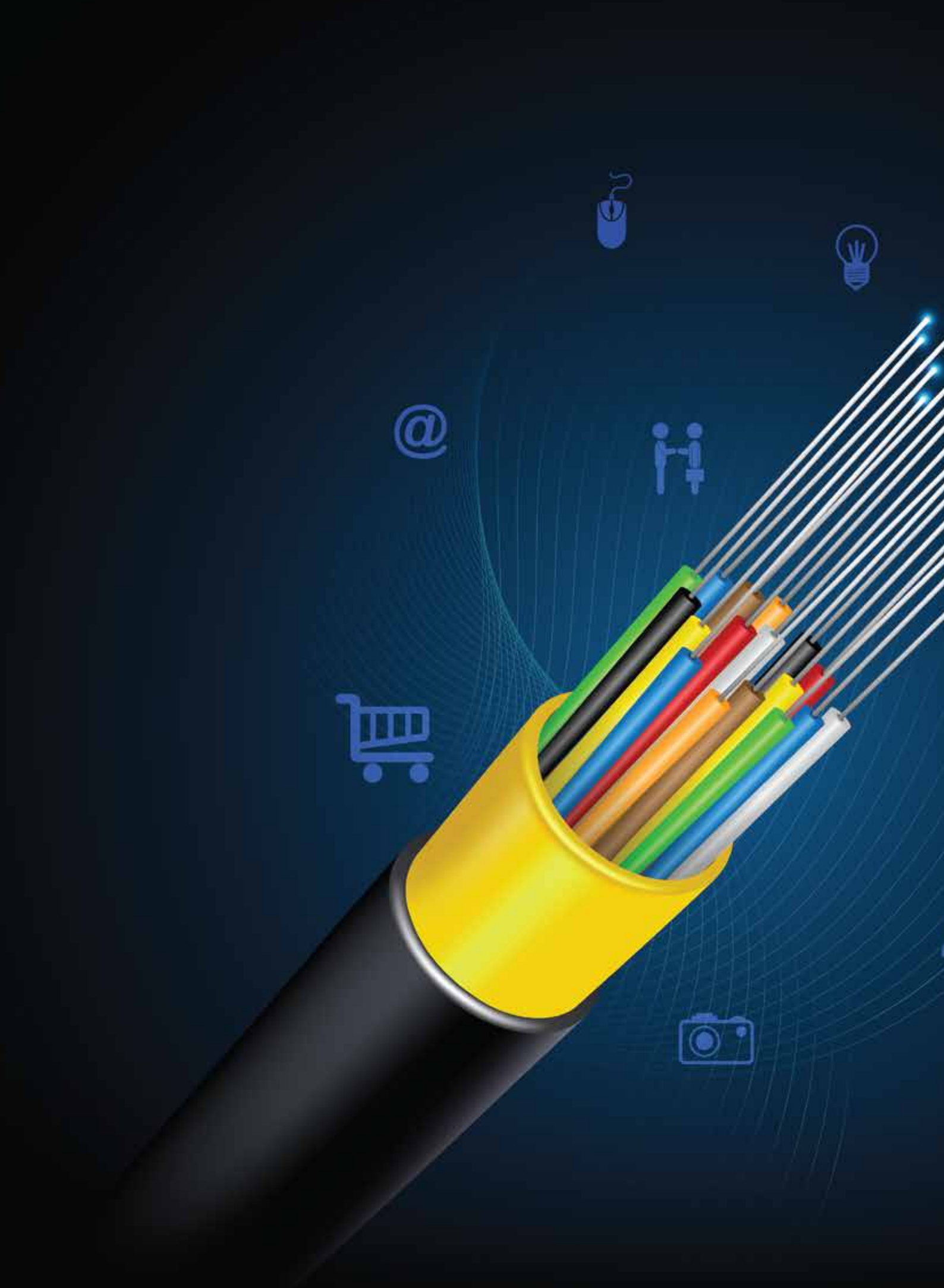


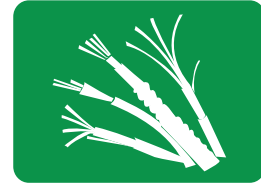
Cable cutting and re-spooling



## WE PROVIDE LARGE PORTFOLIO OF SIGNAL TRANSMISSION PRODUCTS:

- Low Voltage, Electronic, Data, Fiber & Special Cables.
- BNC & RF Connectors.
- Broadcasting Assemblies & Connectors.
- Cabinets, Racks & Data Center hardware.
- Copper & Fiber Passive Network Solutions (Structured Cabling).
- Industrial Ethernet Switches.
- Wireless Solutions.
- Home Automation Systems based on KNX - EIB protocols.
- Lighting & Dimming Controls.
- Audio / Video Equipment.
- Terrestrial, Satellite & IPTV Systems & Accessories.
- Monitoring Devices & Visualization software.
- Security, CCTV & Access Control Systems & Accessories.





## Cables & Accessories

Our relatively large inventory had added a lot to our strength, thus paying high attention to the urgency of market requirements.

Engraved its name with quality cable products, Al Mazrouei ICAS WLL had the legacy of being an effective knowledge partner in the field of low current cables.

Our strategic business alliance programs with reputed cable vendors and manufactures had allowed us offer brilliant solutions, thus acting proactively to market innovations.

Our large stock inventory had added a lot to our strength, thus paying high attention to the urgency of market requirements.

Our willing to support sales engineers had made the difference, thus providing the right solution for any cable application, whether it is control, instrumentation, fiber, data or low voltage...

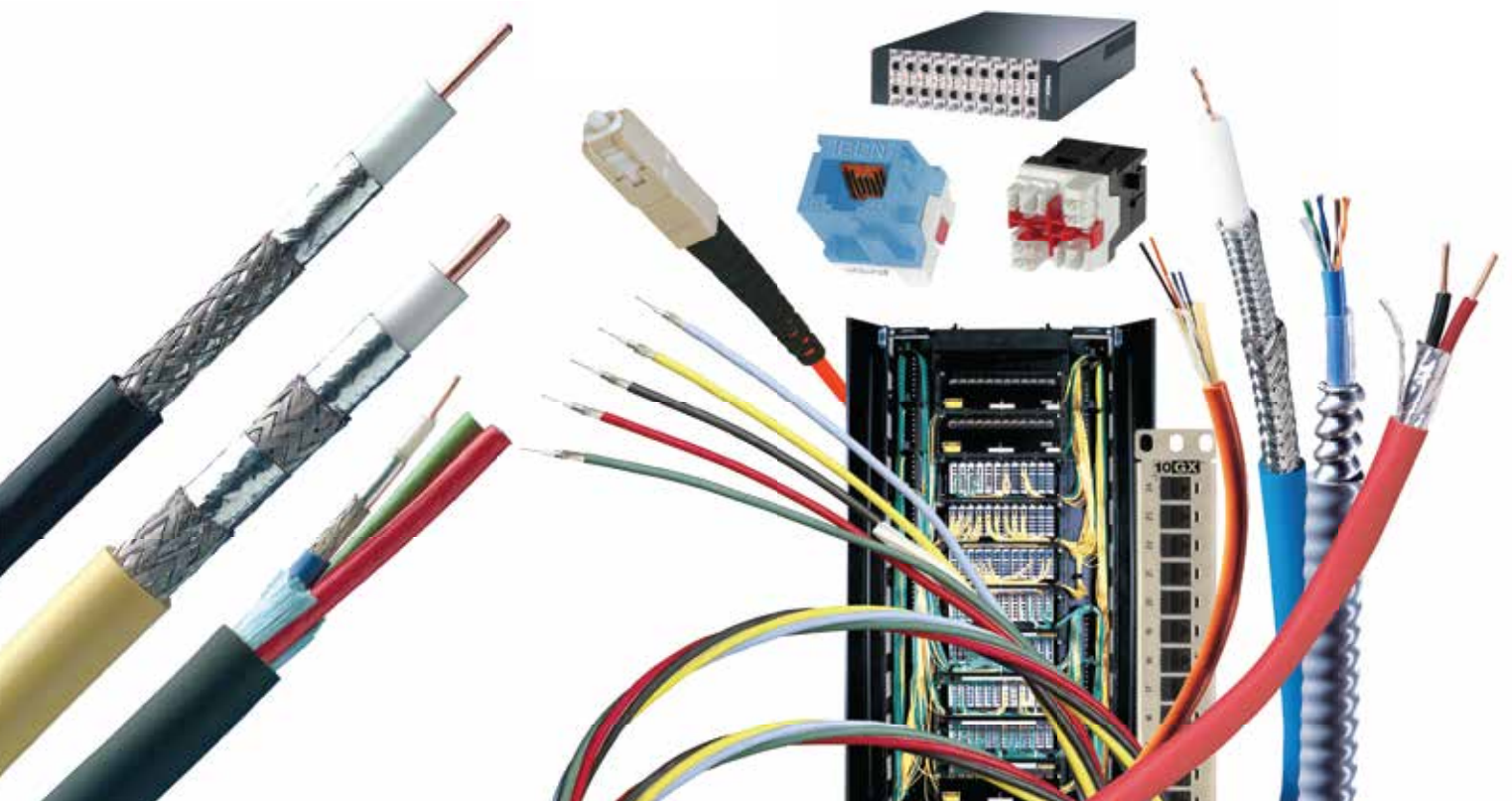


[www.belden.com](http://www.belden.com)

Belden is a world class manufacturer of signal transmission products, primarily for the entertainment, residential, industrial and security market, Belden is one of the largest U.S. based manufacturers of high-speed electronic cables and focuses on products for the specialty electronics and data networking markets including connectivity.

Belden is the brand customers count on the most for the best product performance and expert care and advice-whenver and wherever they need to transmit a signal.

Belden offers thousands of wire and cable products such as multi conductor, paired, coaxial, flat, optical fiber cables, portable cordage, moulded cable assemblies, hook-up and lead wire. The standard Belden product offering also includes a complete selection of data network connectivity products and structured cabling systems and services, enclosures and racks, surface raceway systems, and cable management accessories. All Belden products are designed and manufactured to the strictest quality standards in the industry, resulting in an incomparable reputation for worldwide reliability.





**Belden® BNC High-Definition Connectors**

Belden, the brand Broadcast Engineers and A/V professionals trust, brings you innovation and superior performance with a new line of Belden Brilliance® High-Definition BNC Connectors. Belden HD Brilliance Connectors with Belden Brilliance Coax Cables deliver unparalleled end-to-end performance for Broadcast Industry.



**Al Mazrouei ICAS WLL is a recognised Belden's Partner Alliance Distributor**

As a leader in signal transmission solutions, Belden takes great pride in its ability to meet the local needs of its customers around the world. To do this effectively, Belden have appointed a selected group of authorized Channel Partners in the Belden Partner Alliance Program that offers high-availability and service excellence for Belden Solutions at a local level.

Belden's Partner Alliance Distributor stand apart from other Channels. As a Partner Alliance Distributor, Al Mazrouei ICAS WLL assure Belden Customers a:

- + **Secure Supply Chain** of products sourced direct from the manufacturer
- + **Local Access and High Availability** of Belden inventory
- + **Manufacturer-Backed Warranty** for products procured from authorized Preferred Partners
- + **Trusted Partner** with the technical competence to select the right solution for your needs
- + **World-Class Support** from trained and certified service agents



When purchasing from unauthorized Channels there is always a risk that these goods being ineligible for Belden manufacturer's warranty. Products from Unauthorized Channels may be:

- **Fake:** cheaply produced look-a-like products often branded as "Belden" or referred to as "equivalent"
- **Unfit for purpose:** not meeting your exact specifications
- **Unfit for sale:** reconditioned or altered without Belden endorsement
- **Incorrectly specified:** usually sub-standard product that is not manufactured to the required industry standards or Belden's patented designs
- **Non-approved goods:** sourced via non-recognized supply chains such as 2<sup>nd</sup> hand goods or recycled scrappage

To ensure the integrity of your purchases, Belden recommends that you only purchase Belden products from a secure and seamless supply chain via authorized Belden's Partner Alliance Distributor.

## BELDEN's Range of Industrial Cable

For over 110 years, Belden has propelled signal transmission technology forward as the world's leading manufacturer of rugged cable solutions.



### Industrial Ethernet Cables & Accessories

Keep your connections strong with Belden's complete range of high quality, high reliability Data Tuff Industrial Ethernet and fiber cables, connectors, tools and accessories. Designed especially for industrial applications, these cables assure performance in even the harshest environments.

#### Portfolio includes:

- Industrial Cat 5e Cable
- Cat 5e PROFINET Cable
- Industrial Cat 6 Cable
- Industrial Ethernet Patch Panel
- DataTuff RJ45 Cables, Connectors and Cordsets
- Industrial REVConnect
- Single Pair Ethernet



### Data BUS Cable

With the broadest Data Bus portfolio in the industry, Belden is sure to have a solution for your application. These cables are tested and proven to work in extreme temperatures and demonstrate resistance to oil.

#### Portfolio includes:

- RS 485 Cable
- Blue Hose (9463) Cable
- ControlNet Cable, DeviceNet Cable
- Fieldbus Cable
- PROFIBUS Cable
- Modbus Cable
- LonWorks Cable
- CC-Link Cable
- CANopen Cable
- Interbus-S Cable



### Fiber Optic Cable

Belden's extensive line of indoor and outdoor cable products are third party tested by Electrical Testing Laboratories (ETL) or Underwriters Laboratories (UL), and approved for use by the National Electric Code (NEC).

#### Portfolio includes:

- Distribution Cable, Interconnect Cable
- Loose Tube Cable
- Mini Distribution Cable
- Tactical Fiber Optic Cable
- Digital Electricity™ Cable
- FiberExpress Optic Hybrid Copper-Fiber Cable
- FiberExpress Flexible Ribbon Cable
- MarineTuff Fiber Cable



### Multi-Conductor Cable

With an unmatched ability to ensure system uptime, Belden's "Classics" electronic, audio, control and instrumentation cables have been specified for rugged industrial jobs for decades. These cables meet the technical requirements of many different types of systems with proven reliability and performance that is best-in-class. Backed by a 10-year, no-cost warranty, these hardy essentials will outlast alternatives even in the most demanding environments.



## VFD Cable

Variable-frequency AC motor drive output cables are subject to harsh operating settings characterized by high voltage spikes, high noise levels and adverse environmental conditions.

As the original developer of high quality VFD cable, Belden knows how to deliver superior electrical performance and reliability, even in the most demanding industrial environments. When you need to keep your motors running, trust your uptime to Belden.



## Flex Cable

Be confident in your mission-critical application installations of flexible and flexing cables.

Across the entire range of MachFlex™ cables, you can decrease the total cost of ownership of your machine or device through reduced cable maintenance cost and improved uptime by specifying reliable cabling infrastructure.

In addition, you can solve the space-saving puzzle by utilizing flexible cables designed for tight spaces while maintaining the physical and mechanical requirements needed for rigorous motion.



## Hook-up & Lead Wire

Rubber and plastic insulated, single-conductor hook-up and lead wire products are designed for reliable and consistent performance. For your quality assurance needs, these components are built to comply with rigid industry and government specifications.

In lead wire manufacturing, Belden controls the entire operation, turning process copper rod into tinned copper wire strands, mixing plastic and formulating rubber for conductor insulations. Trust Belden to deliver industry quality and consistency for your wire needs.



## Portable Cordage

Belden's flexible and durable portable cordage designs have been relied upon by engineers for decades. With rubber and specialty

plastic jacketing options, and finely stranded conductors, you can be certain your cabling will support an installed service life which is second to none.

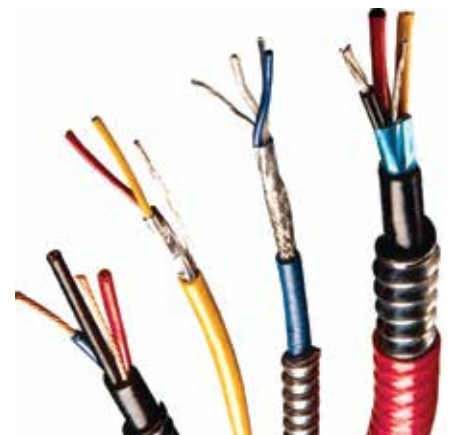


## Power & Control Tray Cable

Rated for UL and CSA, Belden power and control cables provide the backbone for industrial environments, delivering signal and power transmission along cable trays and enclosures from controllers to devices. Field-tested and proven, Belden power and control cables are specially designed to withstand temperature variations and other harsh conditions.

### Portfolio includes:

- Power & Control TC & TC-ER Cable
- Metal Clad (MC) Cable
- Teck 90 Cable



## Instrumentation Cable

Reliability - even in the harshest of environments - is the hallmark of Belden Instrumentation and Thermocouple products.

### Portfolio includes:

- PLTC & PLTC-ER Cable
- InstrumentationTC & TC-ER Cable
- Thermocouple Cable
- CIC & CSA Tray Cable
- CSA ACIC Cable



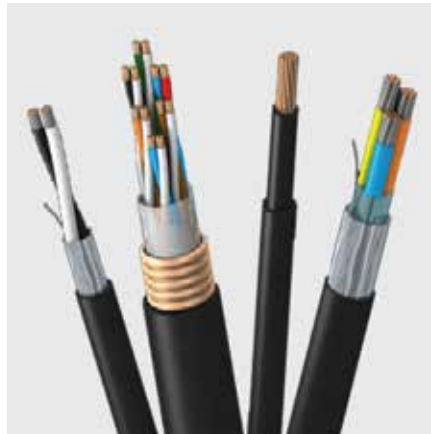
## Armored Cable

Keep your systems running with the strength of Belden's armored cable portfolio. With built-in crush resistance, impact protection and flexibility, these cables are also rated for chemical and water resistance.

And they're so easy to install.

### Portfolio includes:

- Teck 90 Cable
- Metal Clad (MC) Cable
- CSA ACIC Cable



## IMSA Traffic Signal Cable

Belden offers a wide range of products for various municipal transportation applications: traffic communication, fire protective signal, data acquisition, inductance loop detection and traffic signal control.

Manufactured in ISO-certified facilities, Belden provides unsurpassed quality and reliability to ensure product consistency for every specification.



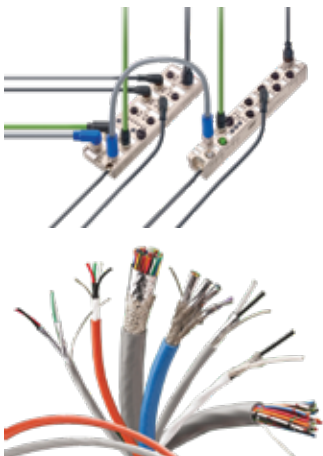
## SpaceMaker Space-Saving Cables

Connect machines and devices in space-constrained harsh industrial settings with these multi-use cables that are tailor-made for machine builders and device manufacturers' needs.

Machine builders no longer have to design around bulky cables, and OEMs can increase productivity by easily adding more machinery to their already crowded factory floors. Let the compact design of Belden SpaceMaker cables provide a space-saving solution when space is at a premium.

## Data Acquisition & Transmission

Delivering infrastructure that makes the digital journey simpler, smarter and secure.



## BELDEN's Audio Video Systems

Designed to support HDBaseT, HDMI and IEEE AVB, Belden's AV products are designed for commercial audio distribution, video display, automation and lighting control.



### Audio Video Cable

Audio Video cabling from Belden is built on innovative products, technical expertise and a worldwide distribution network that can fulfill any and all Audio Video requirements.

#### Portfolio includes:

- 75 Ohm Video Coax Cable
- 4K UHD Coax Cable
- Speaker Cable, Audio Cable
- Microphone Cable
- SMPTE Camera Cable
- Video Triax Cable
- CATV Cable
- Tactical Fiber Optic Cable
- Control Systems & Lighting Cable
- Stage Lighting Cable
- Indoor/Outdoor Stadium Cable
- 4K UHD Media Cable
- ReelTuff Packaging



### Audio Video Connectors

Designed specifically for use with Belden broadcast and professional AV coax cables, Belden connectors maximize signal integrity and ensure quality, performance and durability.

#### Portfolio includes:

- Broadcast Connectors
- Keystone AV Inserts
- Pro-SNS Compression Connectors
- SMPTE Testert



### DCX System Optical Distribution Frame

Ever-increasing data center bandwidth requirements, IP migration in broadcast environments and new stadium technology deployments (such as 5G and IoT) all require more fiber connections. These fiber connections need to be supported effectively while also ensuring easy access to patch cords and trunk cables for quick maintenance and moves, adds and changes.

Achieve successful cable management, handle high amounts of fiber connections and add density to the optical distribution frame (ODF) with DCX's one-of-a-kind innovations.

### Special features:

- Scalable
- Customizable
- High Density
- Modular



### Audio Video Assemblies

Whether you need HDMI, DVI and VGA assemblies, or custom-made assemblies, Belden audio and video assemblies provide the same superior quality that the rest of Belden's commercial AV product portfolio offers.

#### Portfolio includes:

- Custom Broadcast Assemblies
- HDMI, DVI & VGA Assemblies





Customer™  
Innovation  
Center

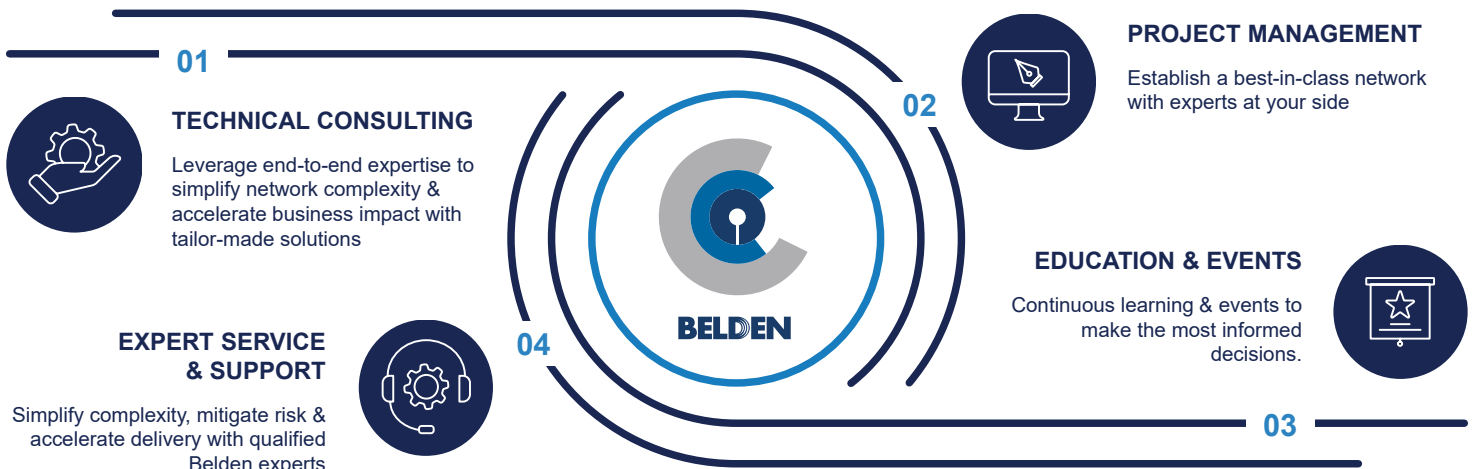
## Digitization Solutions

### How Belden Can Help

As an end-to-end network solution provider, Belden enables you to access the solutions, services and tools you need to take major steps in your digitization journey.

### Global Customer Innovation Centers

Belden’s Customer Innovation Centers (CICs) provide expertise and support throughout the entire solution development lifecycle. These globally located hubs offer access to the capabilities, like running proof of concepts (PoCs) in their Validation Lab.



### End-to-End Solution Portfolio

Belden offers the most comprehensive networking portfolio for your sensor to cloud solution. This includes:

Cable	Connectivity	Networking	Software & Services
<ul style="list-style-type: none"> <li>• Fiber</li> <li>• Copper</li> <li>• A/V</li> </ul>	<ul style="list-style-type: none"> <li>• Fiber</li> <li>• Copper</li> <li>• A/V</li> <li>• Racks</li> <li>• Connectivity Tools</li> <li>• Active I/O Modules</li> <li>• Passive Distribution Boxes</li> <li>• Connectors</li> </ul>	<ul style="list-style-type: none"> <li>• Wireless</li> <li>• Gateways</li> <li>• Switches</li> <li>• Routers</li> </ul>	<ul style="list-style-type: none"> <li>• Network Management Software</li> <li>• Firewalls</li> <li>• SCM &amp; VM</li> </ul>

## Belden Experts at Your Side

Selecting the right solution for your business needs is not an easy task. Belden experts will be your trusted advisors in each phase of your automation journey.

### Solution Architect



Deep technical knowledge of network architectures

Design solutions and networks of the future

### Digital Automation Consultant



Lead workflow and data assessment

Identify opportunities for digital transformation

Calculate projected ROI of digital transformation solution

### Solution Consultant



Deep technical knowledge of applications/verticals

Conduct industrial network audits

### Service Engineer



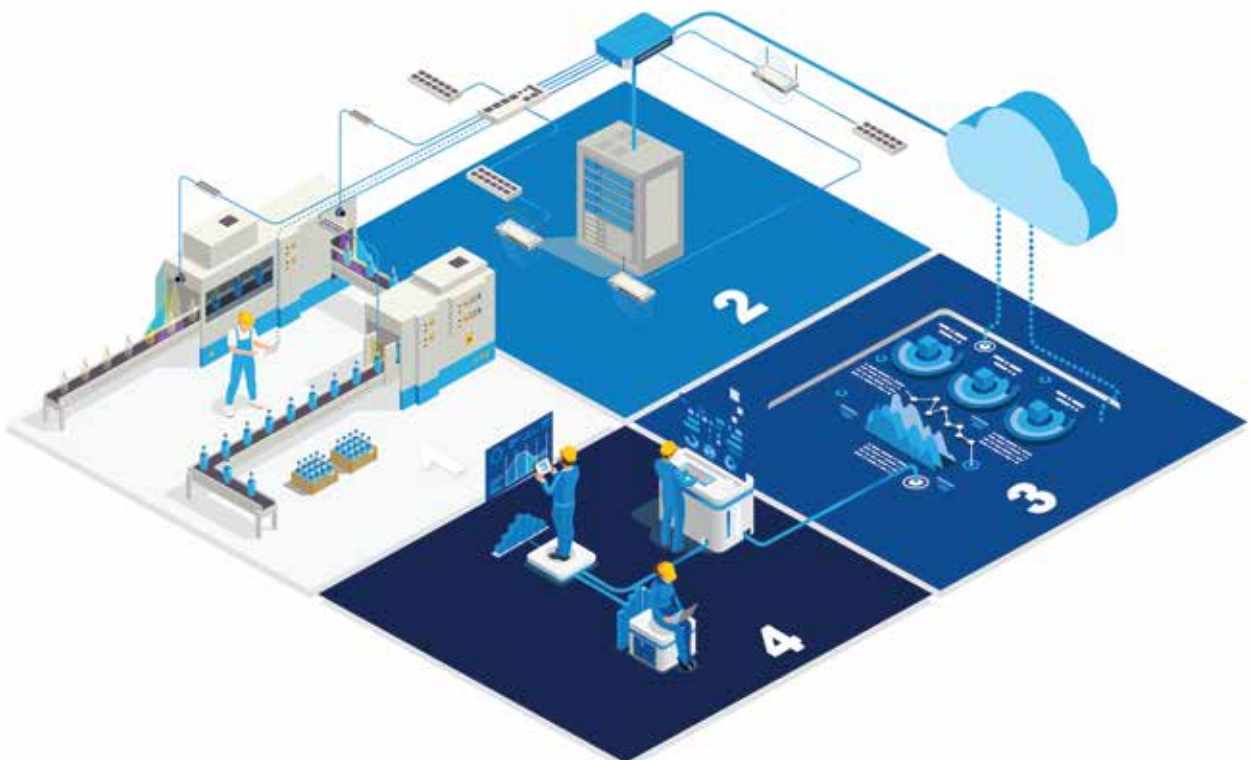
Deep knowledge of products and technologies

Test and commission networks

Deliver pre- and post-sale technical support

## Bringing It All Together

With Belden experts at your side throughout your complete digitization journey, Belden will work together to bring your automation plans to life by combining Belden's extensive network portfolio and third-party tools and services.



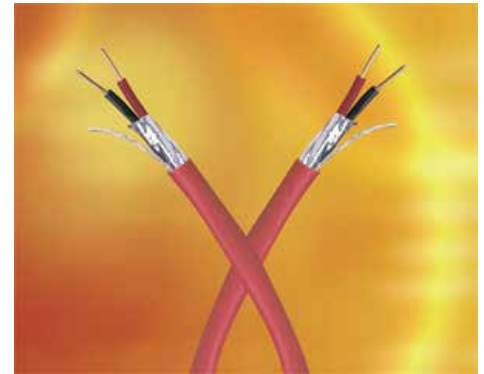


## Belden Offers a Full Line of Fire-resistive, 3-hour Rated Circuit Integrity (CI) Cables

Belden 3-hour Rated Safe-T-Line CI cables ensure the continued operation of a building's EVAC systems in the event of fire. ABS approved 2-hour Rated CI cables are suitable for shipboard applications or handling controlled shutdown situations in industrial environments.

### Belden now offers a full line of high quality, high reliability 3-hour rated CI cables

- Safe-T-Line CI cables meet the most stringent circuit integrity requirements on the market, BS 6387 CWZ:
  - C: resistance to fire alone at a temperature of 950°C for 3 hours
  - W: resistance to fire with waterspray for 15 minutes at 650°C
  - Z: resistance to fire with mechanical shock for 15 minutes at 950°C
- Resistance to fire for unprotected small cables used in emergency circuits for 2 hours as per EN 50200
- Riser rated FPLR cables as per UL 1666
- Low smoke, halogen free cables with operating temperature of up to 105°C, suitable for applications where temperature ranges are variable



### Survivable System Choices

When life-saving Emergency Voice-Alarm Communications (EVAC) systems are installed, there are three means by which to meet the 3-hour circuit integrity code requirements:

- Structural/architectural 3-hour chase that is not a means of exit - a very expensive and often unsightly or impossible choice if the building is being rehabilitated
- Mineral Insulated (MI) cables - a very expensive cable type that is also laborious to install
- Belden Safe-T-Line continuous length, flexible extrusion, fire-resistive circuit integrity cables, or similar make the most economical choice and the easiest installation option

### Easier to Terminate and Install

To meet the needs of installers, Belden Fire-resistive Safe-T-Line cables are manufactured with a user friendly, aluminum-polyester. Beldfoil shielding tape, instead of the copper tapes used by other manufacturers. This makes Belden's CI cable the most easily terminated cable of its kind.

### Industrial 3-hour Rated CI Cables

Belden Type PLTC shielded multi-conductor cables are for industrial use, to be employed in controlled shutdown or emergency situations in circuitry that pertains to mission-critical industrial processes.

# Major Projects

## Qatar

- 974 Stadium
- Ahmed Bin Ali Stadium (Al Rayyan)
- Al Bustan Road (Intelligent Transport System)
- Al Daayed wedding Hall
- AL Janoub Stadium
- Al Janoub Stadium (Al Wakra)
- Al Jazeera T.V.
- Al Kaas T.V.
- Al Rayyan Stadium
- Al Reffa Wedding Hall
- Al Sharaq resort
- Al Thumama Stadium
- Al Udeid Air Base
- Al Wajaba Palace
- Alar Hotel
- AMAN Hospital
- Amiri Guard Duhail
- Asian Games Village
- Aspire
- Banana Island - Anantra Resort
- Bridge Arts & Science College
- College of Media and Communication
- Doha Convention Centre
- Doha Exhibition and Convention Center
- Doha Land Complex
- Doha Live
- Doha Metro
- Doha Oasis
- Dolphin Royal Plaza
- Education City
- Educational City Stadium
- Falcon 5 Project
- Gewan Island
- Grand Zone – Mall Of Qatar
- Hamad International Airport Expansion.
- Hamad International Airport Extension (Western Taxiway & Stand Development)
- Hamad Medical Corporation Hospital Extension Project- Al Khor
- Katara Towers
- Khalifa Avenue Road (Intelligent Transport System)
- Khalifa Stadium
- Landscape for Commercial Boulevard-Lusail
- Lulu Mall -Bu Sidra
- Lusail City Utility Tunnel
- Lusail Multipurpose hall
- Lusail Palace
- Lusail SEEF
- Lusail Stadium
- Lusail Underground Car Park
- Lusail Multi-purpose
- Marsa Malaz
- Meeza Data Center- Qatar Science and Technology Park
- Museum of Islamic Art
- National Library
- New Doha International Airport
- New port Project
- Pearl Qatar
- Petroleum Financial District
- Qatar Fertilizer Company
- Qatar Handball Stadium at Duhail
- Qatar National Convention Centre
- Qatar National Museum
- Qatar T.V.
- Qatar University
- Salwa Beach and Resort
- Sidra Medical Research Centre
- Surgi Art Center -Lusail
- The Naval Base
- Waldorf Astoria, West Bay
- Well Cornel Medical College
- West Bay Complex







## Telecommunication

By Partnering with the industry professionals the division is able to deliver a complete design, supply and other support.

Telecommunication division is specialized in structured cabling solutions, WIFI solutions, industrial switches and routers solutions.

We are proud to be associated as authorized channel partner of world renowned brands - enabling us to give our esteemed clients end to end solutions - Design, Supply and Installation



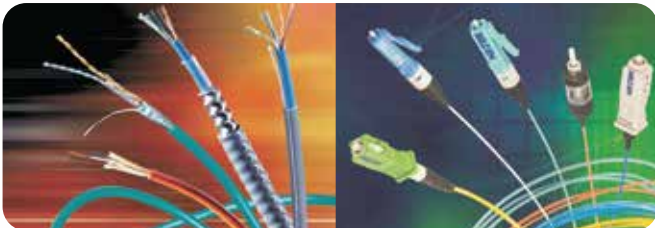
[www.belden.com](http://www.belden.com)

Belden IBDN is a standards-based, end-to-end structured cabling system that allows users to build an information infrastructure that will evolve and constantly keep up with competitive work environments. Belden offers several Belden IBDN systems to choose from:-

- Belden IBDN Cabling Solutions
- FiberExpress Cabling System
- Belden IBDN System 10GX

Belden® introduces a series of enclosures that deliver cost savings and improve efficiency through enhanced cable management and ease of installation.

- Save time with flexible, versatile and easy-to-install solutions that work without fuss
- Keep down costs of installation, maintenance and overall footprint yet provide reliable protection for your sensitive electronic equipment
- Achieve maximum uptime thanks to these enclosures' significant contribution to your network's overall reliability





*The Technology and Market  
Leader in Industrial Networking*

[www.hirschmann.com](http://www.hirschmann.com)

***“As specialist for automation and networking technology, Hirschmann™ develops innovative solutions, which are geared towards its customers’ requirements in terms of performance, efficiency and investment reliability. ”***

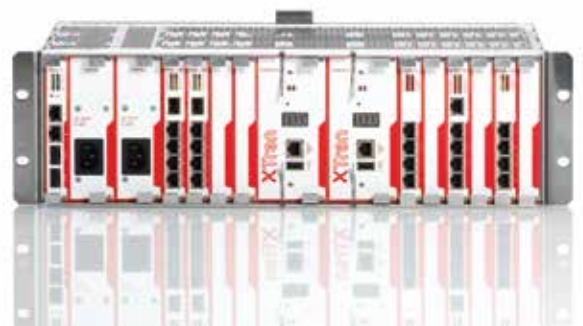
Hirschmann™ has adopted a major role in the establishment of Ethernet technology as the standard in the production area. Today, the Powerlink protocol from the Ethernet Powerlink Standardization Group already provides an open method for the realisation of hard realtime applications using Ethernet, for example for machinery controllers by integrating the CANopen® Protocols. Hirschmann™ is a founding member of the EPSG.

It is currently the only brand on the market to offer a complete product range for homogeneous data communication in the industrial sector using Ethernet and Fieldbus systems. This includes Layer 2 and Layer 3 switches as well as industrial security and WLAN systems that provide a uniform, company-wide communications infrastructure without interface problems and media discontinuities. These products are used in many different applications such as factory automation, process control, transportation and mechanical engineering.



 **OTN Systems Belden Solutions NV**

Belden in Olen, Belgium, has been a leading supplier of mission-critical telecommunications solutions to industrial customers for 30 years. . The team has gained market leadership in specific industrial segments including metros, lightrails, oil and gas, power utilities and mining. With its product line XTran, the company is ready to become the dominant telecom player across all industries. XTran allows customers to go full packet. Its underlying MPLS-TP technology avoids the complexity of generic telecom solutions developed for service providers. XTran secures reliable operations in harsh environments while its management systems (TXCare) support intuitive and simple handling.












# Belden Belden Rack and Cabinet Systems

## Cabinets

As the premier supplier of cable and connectivity systems, Belden has leveraged its networking skills, engineering expertise and end-user experience to provide a broad portfolio of racks and cabinets that address security, availability and efficiency challenges.

## Features and Benefits of Belden Cabinets

-  Load Capacity
-  Adaptability
-  Security and Intelligence
-  Modularity
-  Scalability
-  Environmental and Seismic
-  High-Capacity Hosting



## Power Distribution & Climate Monitoring

Belden in-cabinet mounted power distribution units (PDUs) and environmental monitors and sensors are designed from high-quality components to support all your mission critical applications.



## Belden PatchPro

### Real-Time Network Security and Transparency

To meet growing data center requirements, Belden introduces a hardware and software portfolio for networks that call for high security, maximum reliability and constant uptime: the Belden PatchPro® Intelligent Patching Solution.

Building on state-of-the-art technology, PatchPro® patching products can be combined to provide a complete, cost-effective intelligent patching solution that ensures increased network security, reliability and uptime.



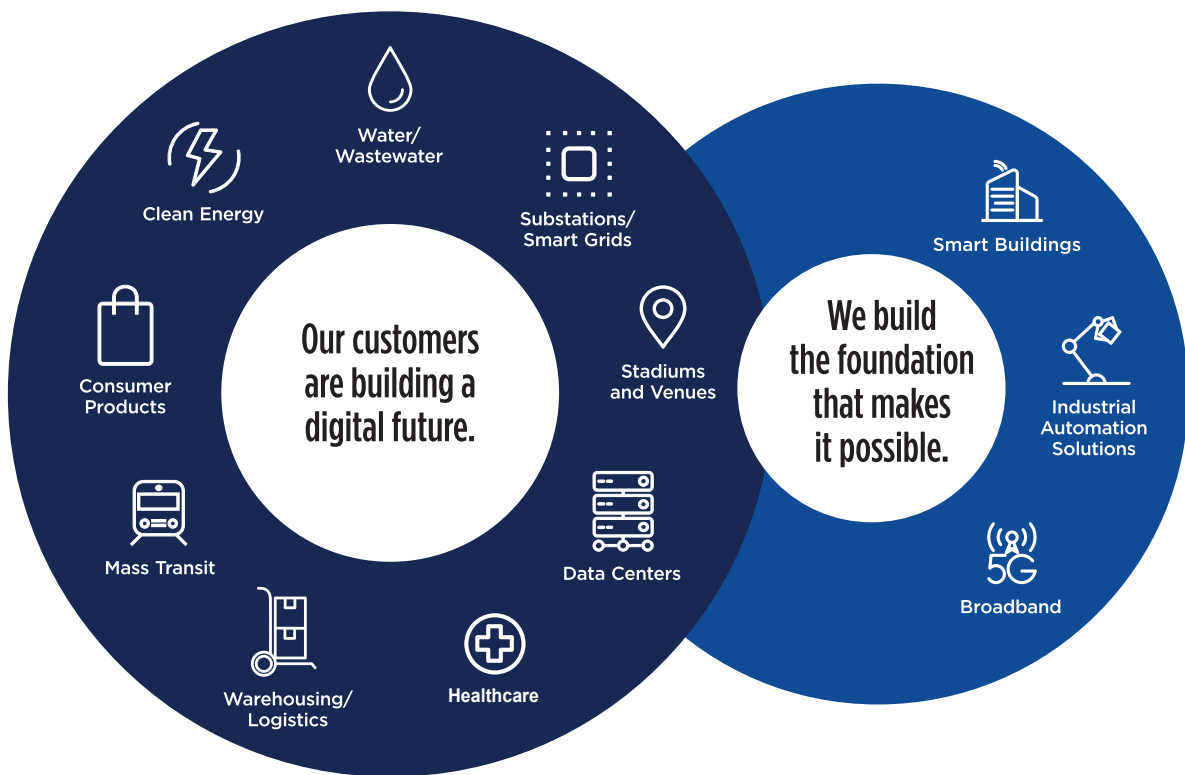
Real-time Network Security and Transparency with Belden's PatchPro® Intelligent Patching





Building the foundation for  
Real Time Decisions

Delivering infrastructure that makes the digital journey simpler, smarter and secure.





Data Orchestration & Management







[www.excel-networking.com](http://www.excel-networking.com)

Excel is a world-class premium performance end-to-end infrastructure solution - designed, manufactured, supported and delivered - without compromise.

-  Number one cabling brand in the UK
-  %100 Plastic Free Packaging

-  25-Year Warranty for Excel Partners
-  Standards compliant from 'cable to rack'



The Excel brand, owned by Mayflex part of the Sonepar Group and is driven by a team of industry experts, ensuring the latest innovation and manufacturing capabilities are implemented to surpass industry standards for quality and performance, technical compliance and ease of installation and use.

Excel emphasis is on compatibility and standards compliance 'from cable to rack', reliability and product availability.

Excel is the complete trusted solution. Since the brand was launched to the UK market in 1997, Excel has enjoyed formidable growth and is sold in over 70 countries throughout the world.

**Excel portfolio includes:**



**Plastic Free Packaging**

Excel was the first cabling infrastructure vendor to remove the single-use plastic from the majority of the Excel product packaging. By switching to "natural" brown packaging options which are both recycled and %100 recyclable, Excel removes 18 million (45 tonnes) of single-use plastic bags from entering the supply chain each year.

Thanks to Excel plastic free initiative, customers can also save up to %60 of their preparation time when they're installing keystone jacks, as these products are available in multipacks of 24, supplied in a simple %100 recycled and recyclable cardboard tray as opposed to individual single-use plastic bags.



Reduced Waste Volume



100% Recyclable Waste



Quicker to Install



Easier for Engineers On-Site



Lower Installation Costs

## Major Projects

### Qatar

- ACS American School
- Ahmad Bin Ali FIFA 2022 Stadium
- Al Bustan 109 Hotel
- AL Huwailah Tower
- Al Jazeera Workflow Transformation
- Al Majed Lusail Fox Hills
- Al Mana Edition Hotel
- Al-Saad Stadium
- Development of ISF Camp - DUHAIL CPC 02
- Diabetes Hospital
- Doha Bank Head Office
- Doha College
- Doha Street Surveillance Project
- FBA Tulip Inn Hotel
- FIFA Site Pitches
- HBK Main Head Quarter
- Hilton Aspire Palace
- Hilton Grand Zone Qatar Mall
- Intercontinental Hotel
- Katara Hills
- Katara Residential Project
- Lekhwiya Multipurpose Hall
- Lulu At Al Khor
- Lusail Al Fardan Tower
- Lusail Al Majed Tower
- Lusail CBQ tower
- Lusail Energy City
- Lusail Knowledge School
- Lusail Multipurpose Hall
- Lusail Qatar Charity Tower
- Lusail RES45 Tower
- Lusail The Eighteen
- Madinat Mawater
- Manateq Oasis- Ras Bufontas
- Merweb Residential Apartments
- Musheireb- Heart of Doha
- NDIA - CP13 and CP 60
- NED Hotel
- QAF Buzair Camp
- Qatalum
- Qatar Airways 8 Buildings D-Ring Road
- Qatar Central Bank
- Qatar Energy
- Qatar Foundation
- Qatar Museum Authority Building
- Qatar Shell
- QatarEnergy LNG NFE
- QatarEnergy LNG NFPS Offshore COMP2
- QELNG Industrial Network Upgrade
- Ras Laffan Emergency and Safety College
- Rixos Baghdad
- Rixos Gulf Hotel Doha
- Standard Chartered Bank - Doha Head Office
- Thumama FIFA 2022 Stadium
- Thumama International School
- Udeid Air Base
- Umm Salal Ashghal Labor Camp
- US Embassy in Doha
- Water Mega Reservoir Kahrama Project
- Wedding Hall (Al Daayan)
- Weill Cornell Medical Collegea





## Smart Systems



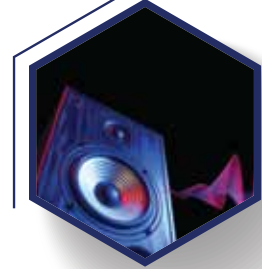
We take pride in offering the latest technology to control AC, lighting, sound systems, curtains, security systems and much more.



CCTV, Security & Access Control Systems



Sound & Background Music System



Door Communication Systems



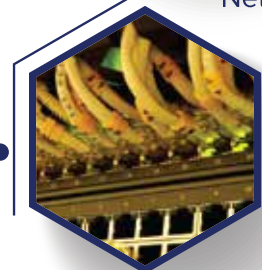
Smart Home Systems



Audio/Video Systems



Networking & Wireless



SMATV & IPTV Solutions



Access Control



Home Theater Solutions



Wiring Accessories



Our high quality products in combination with our many years of market experience are the platform for our success and enabled our highly trained engineering personnel to maintain the best quality of service, whether it is at the site or after sales.

We take pride in offering the latest technology to control AC, lighting, sound systems, curtains, security systems and much more. All can be done from one elegant digital wall mounted or wireless room control unit, with a large variety of colors and designs that match our classic to modern ranges of decorative sockets and switches.

Whenever you are in need of decorative, high quality wiring devices or sophisticated Smart Systems, Al Mazrouei ICAS WLL is your right partner.

# JUNG

[www.jung.de/en](http://www.jung.de/en)

## JUNG - Electrical wiring devices and systems

Our product portfolio includes an extensive selection of equipment and systems: from switches, socket outlets, dimmers and observers to radio, lighting, blinds and temperature control systems all the way to the building management system KNX.

### Smart Control 8:

#### A touch screen for the entire building management

Convenience, functionality and safety: The new JUNG Smart Control 8 is a capacitive touch display for operating every function from door communications to controlling smart homes.



### A new addition to the Smart Control family

The elegant Smart Control 5 presents itself as the latest extension to the Smart Control series. Thanks to a slim, compact design, it fits into a standard flush wall box. With the high-resolution touch display, the functions can be conveniently operated.



### F 50 KNX Compact room controller: Variety of functions, intuitive operation

New room controller for the KNX F 50 family: the KNX compact room controller appeals by intuitive operation and two built-in temperature controllers. The backlit LCD clearly shows the most important values and functions, irrespective of the viewing angle.

### Push Button Sensors

Controls with a new design. The new F 50 sensors in the design of the AS, A, CD and LS ranges make a convincing impression through their homogeneous surface appearance, thanks to the recessed buttons. The choice of a transparent or coloured labelling field, coloured LEDs that display the current status and operation as well as the illuminated labelling area all round off the design concept.



### Design Switches

A prestigious design finish derives its appeal from exclusive effects. The design switches satisfies the standard surrounding well. Cool stainless, aluminium, chrome, precious gold plating, white or black-they land a special touch wherever the emphasis is on. These colors are complimented with a bright and polished finish suitable for any traditional interiors with extraordinary elegance.



### Les Couleurs® Le Corbusier

Le Corbusier is the most significant architect of the 20<sup>th</sup> century. Inspired by the colours of nature, he developed a unique colour system based on two impressive colour keyboards.

As an international premier, JUNG is now presenting its classic line of switches in the entire palette of this colour system.

Something remarkable: every one of the 63 colours can be arbitrarily, yet harmoniously combined with another from the system.





[www.vimar.com](http://www.vimar.com)

AL Mazrouei ICAS WLL has included VIMAR a renowned Italian brand to its product portfolio. VIMAR has grown by interpreting the evolution of the housing styles of a society undergoing fast transformation. From the simple electrical installation, which mainly needed safety, to modern home automation systems, which make technology a daily ally.

Vimar Group established in 1945 , has a comprehensive range of products and solutions for wiring accessories, home and building automation under VIMAR brand, and for gate automation & CCTV under ELVOX brand.



Wiring accessories

Home Automation

Marine Automation

Alarm intrusion system

Guest room management systems (GRMS)

Background music system



### Vimar solutions for the hospitality industry

Energy saving, comfort and design, these are the three distinctive characteristics of Vimar’s latest new package of solutions dedicated to the service industry.

**Energy** saving because the new devices are designed to automate hotels and make them smart. In fact, thanks to their smart technology, they are designed to avoid unnecessary energy wastage, turning off lights, air conditioning and loads when they fail to detect the presence of the guest inside the room.

**Comfort** because they signal the status of the room (free or occupied) and automate the lights, thereby guaranteeing guests benefit from an improved accommodation experience.

**Design** because, like all other Vimar products, these new solutions have equally been designed with meticulous care, down to the smallest detail, and they stand out for their sophisticated details and the use of exclusive materials. The user experience offered is therefore truly unique, thanks also to the perfectly matching styling and the endless customisation possibilities.



[www.elvox.com](http://www.elvox.com)

Smart Door Entry Systems

Video Surveillance System

Gates Automations



# SSS SIEDLE

[www.siedle.com](http://www.siedle.com)

Siedle is a leading communication technology company in the worldwide intercom and access control markets. They provide first rate intercom and access control systems to not only commercial and industrial buildings, but also to the rapidly growing challenges of residential buildings.

Siedle has won numerous prestigious awards for design excellence throughout its 250 - year history while continually developing the most innovative equipment for the international intercom and access control marketplaces.

Outdoor Stations

Indoor Stations

Siedle Access





[www.crestron.com](http://www.crestron.com)

**“Elegant control and automation systems perfectly tailored to your lifestyle.”**

Crestron is the one and only company that designs, manufactures and supports the full spectrum of home automation products and solutions to ensure unparalleled performance and reliability for you and your family.

From one brilliant touch screen you can see, hear, and control all of the Crestron technology in your home. Check the weather or lookup a recipe as you listen to your favorite music; you can check security cameras, turn lights on and off around the house, adjust the temperature, let in a guest, or even watch TV right on your touch screen. Crestron technology truly gives you all-in-one seamless connectivity in the heart of your home the ultimate experience.

Turn your personal oasis into a true paradise with Crestron control that anticipates your every want and need. As the sun sets, the pool lights turn on automatically and the landscape lighting gradually ramps up.



**Audio Visual System**

**Be Present. Stay In Control. Everywhere. All The Time.**

Leading the way with AV integration equipment where video comes to life and audio is crystal clear.

Whether you need to control an AV presentation, video conference or update your digital signage, our Audio/Visual product line will keep you connected and in control of your technology.





[www.lutron.com](http://www.lutron.com)

In almost 50 years of innovation, Lutron has invented hundreds of lighting control devices and systems, and expanded their product offering from 2 products to 15,000.

The company has advanced the technology of lighting control while maintaining top market position by focusing on exceptional quality and design.

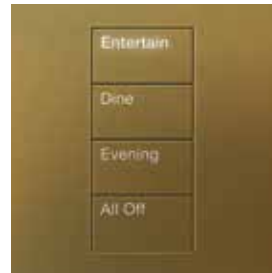
Lutron continues to lead the market in high-quality lighting controls for fluorescent, halogen incandescent, magnetic low-voltage, electronic low-voltage and LED light sources.

Lutron has also led innovations in window shade technology for the control of daylight, as well as wired and wireless systems, to integrate the control of both daylight and electric light.

- Dimmers & Switches
- Fan Controls

- Timers
- In-wall Sensors

- LED + Dimmers
- Wallplates & Accessories
- Shading Control



**Rest assured**

Control where you want it mount a Pico wireless remote on a tabletop pedestal. Tabletop pedestals are available in single, double, and triple configurations.



**Complete your home with RA2 Select.**

Personalised smart lighting and shade control for any home, any budget.

Added convenience. More comfort. More reliability. Staying in touch with your home, even when you're not there.



### Shading Solutions

Lutron has many years of experience and knowledge in the automated shading industry. Lutron provide the entire shading solution - the shade itself, electronic drives & controls, power supplies, and hardware ensuring the highest-quality products for customer satisfaction.



A contemporary and stylish window treatment that combines superior functionality with a clean and elegant aesthetic.



Choose the fascia option that meets your style needs.

Designer hembar style offers a clean aesthetic look.

Shades are controlled with a Pico wireless control or integrated into a whole-home control system.

### Fabric options

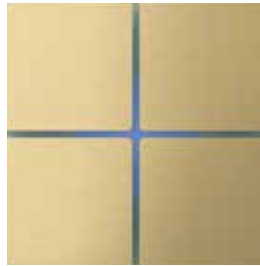
Shades are available in a wide variety of fabric colours and textures.

# basalte

[www.basalte.be](http://www.basalte.be)

Basalte want to bring design and technology together to help create a place where people truly can feel at home. Intelligent home technology subtly brings comfort but should always fit beautifully with your own design and lifestyle.

Imagine, with one slight touch, the room dims to the right scene, music starts playing, the temperature rises and the curtains close. The integration of all these functions in an intelligent and user-friendly system is Basalte Home, the future of the modern home. The minimalist look of our products and the use of high-grade materials and finishes result in a timeless design for the intelligent home.



**AUDIO SOLUTIONS**



Outdoor Speakers



Hi-Fi Speakers



Built-in speakers



Invisible Speakers

**biamp.**

[www.biamp.com](http://www.biamp.com)

**LITHEAUDIO**

[www.litheaudio.com](http://www.litheaudio.com)

**Paradigm**

[www.paradigm.com](http://www.paradigm.com)

**STEALTH**  
ACOUSTICS

[www.stealthacoustics.com](http://www.stealthacoustics.com)

**TRIAD**

[www.triadspeakers.com](http://www.triadspeakers.com)

**WHD**  
SOUNDS GOOD

[www.whd.de](http://www.whd.de)

# Intesis<sup>®</sup>

BY HMS NETWORKS

[www.intesis.com](http://www.intesis.com)

Intesis is a leader in design, manufacturing and commercialization of innovative solutions for building automation. Intesis provide the most advanced communication gateway solutions for integrations of different systems. Intesis solutions are developed for integrators, specifically designed to be robust so they are reliable in the field and easy to set up.

## Protocol Translators

BACnet, KNX, Modbus, DALI, M-Bus, ASCII, PROFINET, LonWorks, OCPP, EtherNet/IP - all are supported by the Intesis protocol translators.

With cutting edge technology built on a reliable platform, integration solutions are offered for all your needs. Intesis MAPS

## AC Interfaces

Developed with and for all major air conditioning manufacturers, Intesis AC interfaces enable high quality integration of climate systems into BACnet, KNX, Modbus, and 2,4 GHz wireless installations.



### A high-end experience of home cinema

We provides design and installation of home cinema systems including -

- Entertainment systems
- Projection systems
- Room acoustic treatment
- Surround sound systems
- Cinema seating
- Control & lighting systems



## Major Projects

### Qatar:

- Ahli Bank
- Al Najada Boutique Hotel
- Al Sadd Hotel
- Ali Bin Abdullah Rayyan Palace - Rayyan
- Ali Bin Abdullah Rumaillah Palace - Rumaillah
- Bilal Tower
- Commercial Bank Qatar (Karaytiyat, D-Ring Branch)
- Darwish Residential Building
- Doha Convention Center
- Doha Live Hotel
- Ezdan Shiekh Office - Ezdan Tower
- Frasers Suites- Corniche
- H.E. Bin Mahmoud Pearl Villa and Farmhouse
- Katara Boutique Hotel
- Moroccan Villa- Shk. Abdulrahman Al Thani
- Msheireb Downtown Doha
- Novotel Hotel
- Porto Arabia Parcel 14B
- Qatar Petroleum CEO and HQ Boardrooms
- Rosewood Hotel and Residence Doha
- Shk. Abdullah Al Thani Palace
- Shk. Abdullah Eid Al Thani Villa
- Shk. Jassim Al Thani Offices
- Shk. Khaled Al Thani Palace
- Shk. Mohamed Al Thani Palace
- The Gate Mall
- The Group Underground Project
- Viva Bahriya Tower 17 & 11
- Vvip Al Thani - Gharaffa
- Vvip Beach Villa- Al Thakira
- Vvip Guest House - Al Jassasiya



Katara Boutique Hotel



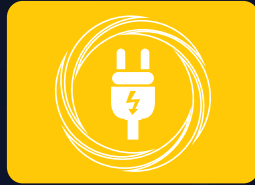
Msheireb Downtown Doha



Rosewood Hotel and Residence Doha



Doha Convention Center



**Power**





To meet the client's requirements in the field of Power Supply Distribution Al Mazrouei ICAS WLL has created Power Division by joining hands with G-TEC a leading European brand.

G-TEC is one of the leading company in Europe in development of UPS (Uninterruptible Power Supply). UPS by G-TEC are designed to ensure the top level of reliability. The continuous technological development of computers and telecommunications, imposes high reliability and efficiency, particularly in environment as Data-Center, Server rooms, Data Bases, Banks, Hospitals and Industrial Controls, where the electrical continuity guarantees the utility quality. G-Tec would be the right solution to feed power to such critical equipment.

## AP 160N / MATRIX

Online UPS compact  
Rack-tower convertible 1-2-3-6-10 kVA



## LIBRA

Online UPS  
10-100 kVA three-phase / single-phase  
10-800 kVA three-phase / three-phase



## MUST900

Modular UPS  
30 - 300 kVA modular UPS - up to 900

## NS3000

Threephase UPS  
60 - 120 kVA Modular Architecture Threephase  
Stand Alone UPS



## SATURN / NOVA

Online UPS  
10 - 20 kVA single phase / single phase and three phases/single phase  
10 - 200 kVA three phases / three phases

## MINI MUST

Online UPS  
10 - 40 kVA/kW 3/3, 3/1, 1/1 phase  
10 - 90 kVA/kW 3/3 phase

## GUARDIAN

The Optimal Solution for Data Center

## Major Projects

### Qatar

- 974 FIFA 2022 Stadium
- Al Bayt FIFA 2022 Stadium
- Al Fardan Showroom
- Al Kass TV
- Al Mazrouaa Camp
- Al Ruwais Camp
- Al Wukair Ezdan Oasis
- Ashghal Health Care Centers
- Aspire Khalifa Stadium
- Community College of Qatar
- Dust Thani 5 Star Hotel
- Golf Course
- Grand Hamad Avenue Kahrama Substation
- Hamad International Airport
- Hilton Old Salata Hotel
- Hilton West Bay Hotel
- Kidzania Project
- Le Mirage Premium
- Lusail Energy City
- Lusail FIFA 2022 Stadium
- Lusail Marina Plot mix 26
- Lusail Qatar Charity
- Marafeq and Qatar Cool Projects
- Ministry of Justice
- Mowasalat Bus Stations
- Musheireb Heart of Doha
- Newton School
- Pearl Perlita Garden
- Porto Arabia 14B Project
- QAF Ammunition Stores
- Qatar Logistics Village
- Qatar Rail Stations
- Qatar University Water Networks
- Ras Laffan substations
- Rixos Hotel Quteifan Island
- Sayliah Camp
- The View Hospital
- Vendom Mall
- Viva Bahriya VB12 & VB 13 Towers
- Wakra Bella Mall
- Waldorf Astoria Hotel
- Westin Doha Hotel & SPA
- Woqood Petrol Stations







J-2022

(ISO 9001 : 2015 Certified – Quality Management System)

## **AL MAZROUEI ICAS WLL**

P.O. Box : 22652, 8<sup>th</sup> Floor, Office No - 2  
Al Shoumoukh Tower - A, Building 58  
C - Ring Road, 231 Suhaim Bin Hamad Street  
Zone 23, Bin Mahmoud, Doha - Qatar  
Tel : +974 44419459  
Fax : +974 44429659  
E-mail : [info@mazrouicas.com](mailto:info@mazrouicas.com)

[www.mazrouicas.com](http://www.mazrouicas.com)